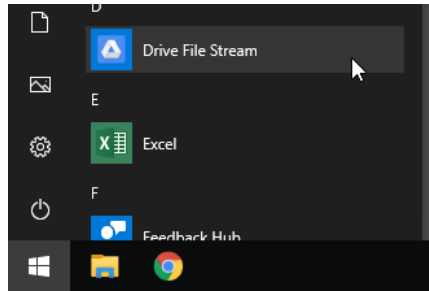


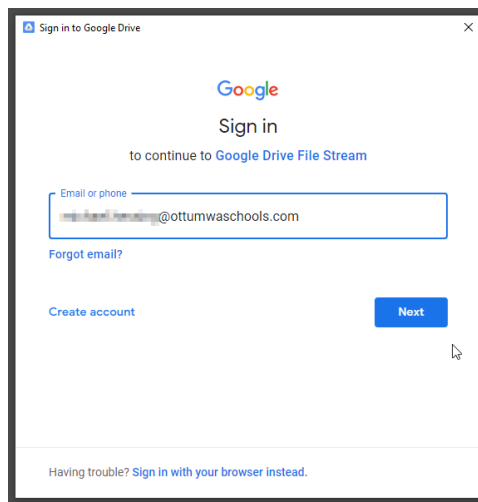


HOW TO SET UP GOOGLE DRIVE FILE STREAM

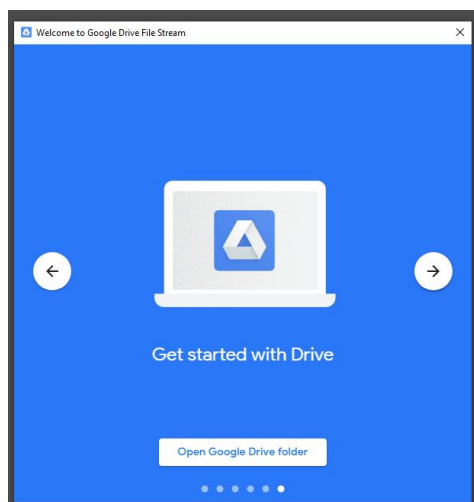
1. Click on the Windows icon on the bottom left of the screen; open Drive File Stream.



2. When prompted, sign into your Gmail account. Enter the credentials you would normally use to access your work account.



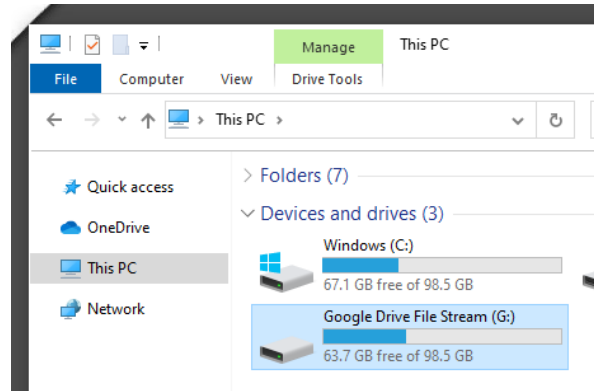
3. File Stream will begin to sync your files to be accessible through your computer. The time this takes may vary depending on the amount of data that needs to sync.





HOW TO SET UP GOOGLE DRIVE FILE STREAM

- Once the sync is complete, you can open your Google Drive folder from your computer by going to File Explorer and clicking on This PC.



- Click on Google Drive File Stream to access your Google Drive files and folders.

